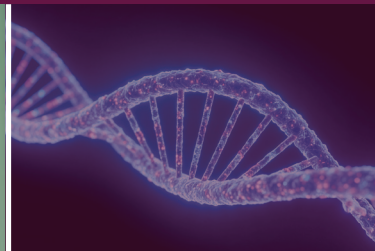


Biology

A Level **Biology** will stimulate the enthusiasm of students from the start. It emphasises the way in which biologists work and the contributions of Biology to society.

Students will develop skills that allow them to analyse, interpret and evaluate scientific information, ideas and evidence. They will be asked to make judgements, reach conclusions, develop and refine practical designs and procedures



“

Austin Friars exists to provide excellent education inspired by our Augustinian values.

”

Take the first step towards your child's post-16 journey: **scan the QR code** to request a prospectus or arrange a visit.



AUSTIN FRIARS

Unit Content:

1. Biological molecules
2. Cells
3. Organisms exchange substances with their environment
4. Genetic information, variation and relationships between organisms
5. Energy transfers in and between organisms
6. Organisms respond to changes in their internal and external environments
7. Genetics, populations, evolution and ecosystems
8. The control of gene expression

Exam Structure:

- Examined at the end of the two-year course.
- Assessment is in three papers, each of two hours.
- A series of practical activities and skills have to be completed throughout the course, with written assessment of these practical skills mainly in Paper 3.

Entry Requirements:

Students would normally be expected to have achieved at least a Grade 6,6 in the Dual Award Science IGCSE or a 6 in the Biology GCSE. Students should have a basic competence in mathematics and be able to express themselves clearly in English, both verbally and on paper.

It is essential that each VI Form biologist reads widely, both science magazines and from the range of books available in the department and school libraries.

Students are encouraged to buy the 'Biological Sciences' magazine via the Biology Department. This provides excellent extension material for the A* grade.

| Paper 1 | Paper 2 | Paper 3 |
|---|--|---|
| What's assessed <ul style="list-style-type: none"> • Any content from topics 1–4, including relevant practical skills | What's assessed <ul style="list-style-type: none"> • Any content from topics 5–8, including relevant practical skills | What's assessed <ul style="list-style-type: none"> • Any content from topics 1–8, including relevant practical skills |
| Assessed: <ul style="list-style-type: none"> • Written exam: 2 hours • 91 marks <i>35% of A Level</i> | Assessed: <ul style="list-style-type: none"> • Written exam: 2 hours • 91 marks <i>35% of A Level</i> | Assessed: <ul style="list-style-type: none"> • Written exam: 2 hours • 78 marks <i>30% of A Level</i> |
| Questions: <ul style="list-style-type: none"> • 76 marks: a mixture of short and long answer questions • 15 marks: extended response questions | Questions: <ul style="list-style-type: none"> • 76 marks: a mixture of short and long answer questions • 15 marks: comprehension question | Questions: <ul style="list-style-type: none"> • 38 marks: structured questions, including practical techniques • 15 marks: critical analysis of given experimental data • 25 marks: one essay from a choice of two titles |

Biology A Level is an essential entry requirement for many universities if you wish to study medicine, veterinary science and dentistry. Acceptance on these courses requires high grades; the A* grade is increasingly required.

An A Level pass in Biology will also be a suitable qualification to aid entry to university courses involving biology, nursing, sports sciences, physiotherapy, biochemistry, pharmacy, botany, zoology, environmental land management, forestry, genetics, horticulture, marine biology and microbiology. The A Level course also provides a good starting point for careers in the food and drink industry and in conservation. It can also be studied in conjunction with Arts and Humanities based subjects to provide a broad educational base at A Level. There is also quite a degree of overlap with the A Level Geography and PE courses. Anyone considering Sports Sciences at University would be strongly advised to follow the A Level Biology as well as A Level PE.